

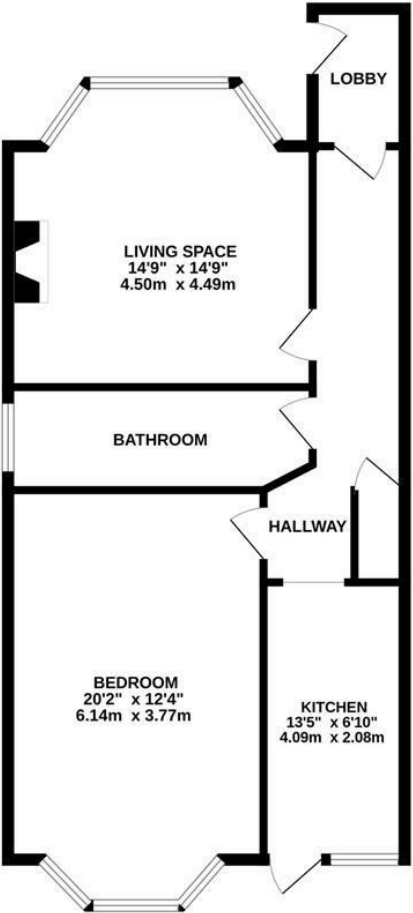
Stockleigh Road, St. Leonards-On-Sea TN38 0JP

Offers in excess of £160,000



A spacious ONE BEDROOM GARDEN APARTMENT set on the lower ground floor of this PERIOD RESIDENCE. It's enviably positioned just a short stroll from the hub of St. Leonards on Sea where there are a range of local stores, award winning eateries, the beach and a mainline railway station with connections to London. Accessed via a PRIVATE ENTRANCE the accommodation here is arranged as a BAY FRONTED LIVING SPACE which provides plenty of room for a dining table to create the ideal sociable setting while the kitchen is separate and positioned at the rear of the property benefitting from access to the COURTYARD GARDEN. There is one WELL-PROPORTIONED DOUBLE BEDROOM which enjoys a rear aspect together with a bathroom. Offering HUGE SCOPE FOR POTENTIAL and situated in a SOUGHT AFTER LOCATION, this fantastic property would make the perfect investment opportunity or SEASIDE RETREAT.

LOWER GROUND FLOOR  
730 sq.ft. (67.9 sq.m.) approx.



TOTAL FLOOR AREA : 730 sq.ft. (67.9 sq.m.) approx.

Whilst every attempt has been made to ensure the accuracy of the floorplan contained here, measurements of doors, windows, rooms and any other items are approximate and no responsibility is taken for any error, omission or mis-statement. This plan is for illustrative purposes only and should be used as such by any prospective purchaser. The services, systems and appliances shown have not been tested and no guarantee as to their operability or efficiency can be given.

Made with Metropix ©2025

